

RegenaVate® DBM

Handling Instructions

RegenaVate Formable DBM, RT (Room Temperature)

Sterile, powder-free gloves are required for proper manipulation of the graft.
For best results, all grafts should be used immediately after preparation.



1 **OPEN** outer pouch using sterile technique. Introduce inner pouches to sterile field.



2 **SHAKE** jar until RegenaVate DBM Powder is homogenous.



3 **FILL** dispenser to appropriate line.

Blue Line: Warm sterile water or saline (43-49°C; 109.4- 120.2°F).

Red Line: Room temperature sterile water or saline (19-25°C; 66.2-77°F) , or patient's blood.



4 **ADD** the fluid to the jar containing the RegenaVate DBM Powder.



5 **MIX** thoroughly using spatula until all contents are completely blended.



6 **FORM** into desired shape using wet gloves and pack into place. Please note: sufficient kneading of the material is required to prevent crumbling.

DO NOT heat paste for more than six hours.

RegenaVate DBM RT Re-Warming Technique:

1. Warm sterile water or saline in a warmer to a temperature of 43° -49°C;109.4° -120.2°F. Do NOT use fluid hotter than 49°C (120.2°F).
2. Re-seal mixing container
 - a. **Syringe:** Place the dispenser cap (included) on the syringe and submerge in the warmer.
 - b. **Jar:** Re-seal mixing container and submerge in the warmer.
3. Leave syringe/jar in the warmer for approximately 5 minutes.
4. If paste does not have desired consistency after the 5 minutes, re-warm. **DO NOT heat paste for more than six hours.**

These are abbreviated instructions. See accompanying package insert for complete instructions for use.

RegenaVate® DBM Handling Instructions

RegenaVate Formable DBM, Frozen

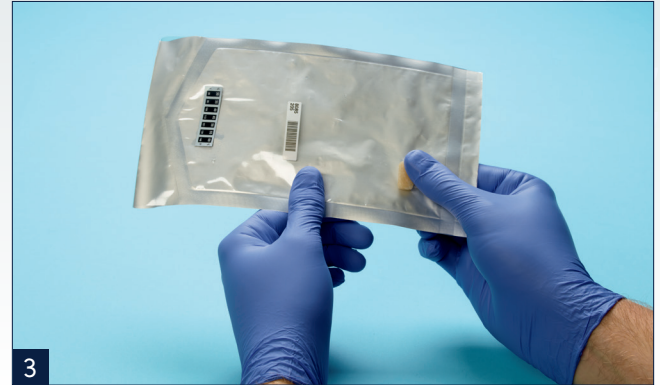


OPEN outer pouch only using sterile technique. Introduce inner pouches to sterile field.

WARM sterile water or saline to 43-49°C; (109.4-120.2°F). Do NOT use fluid hotter than 49°C (120°F). Place sealed pouch containing frozen RegenaVate Formable DBM in heated water.



REMOVE softened graft from warm bath. Open package using sterile technique.



MONITOR softness of graft in pouch after 5 minutes by squeezing gently. If graft hasn't reached desired consistency return to the warm bath.



MOLD graft to final shape.

DO NOT heat paste for more than six hours.

For more information, visit ZimVie.com

ZimVie
4555 Riverside Drive
Palm Beach Gardens, FL 33410
1-800-342-5454
Phone: +1-561-776-6700
Fax: +1-561-776-1272

 **ZimVie**
Restoring Daily Life.®

Unless otherwise indicated, as referenced herein, all trademarks and intellectual property rights are the property of ZimVie Inc. or an affiliate; and all products are manufactured by one or more of the dental subsidiaries of ZimVie Inc. (Biomet 3i, LLC, Zimmer Dental, Inc., etc.) and marketed and distributed by ZimVie Dental and its authorized marketing partners. RegenaVate DBM is processed by RTI Surgical, Inc. For additional product information, please refer to the individual product labeling or instructions for use. Product clearance and availability may be limited to certain countries/regions. This material is intended for clinicians only and does not comprise medical advice or recommendations. Distribution to any other recipient is prohibited. This material may not be copied or reprinted without the express written consent of ZimVie. ZVINST0139 REV A 08/23 ©2023 ZimVie, Inc. All rights reserved.

