

Unlock your practice's potential

with an iTero Element™ 5D imaging system with Plus package and laptop

Designed for success out of the box

- Dell laptop with accompanying support and manufacturer's warranty included with purchase^{1,2}
- Dedicated technical support and clinical training
- Service and iTero™ scanner warranty included³
 - Hardware replacements available with active warranty
 - Unlimited scans and compliant cloud-based storage
 - Sleeker footprint for easy mobility
 - Latest software release and updates



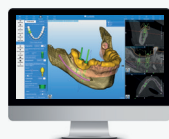
Laptop included with purchase.

[Click here](#) for more information

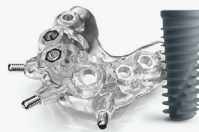
Streamline your workflow



Scan
Get patient data



Plan
Use RealGUIDE™ or Implant Concierge™ for your treatment planning



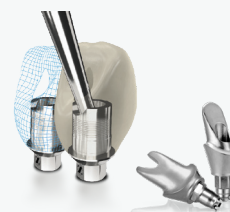
Place
Use our fully guided system



Heal and Scan
Scan the Encode® healing abutment



Send Scans to Partners
Forward data file to preferred lab or ZimVie



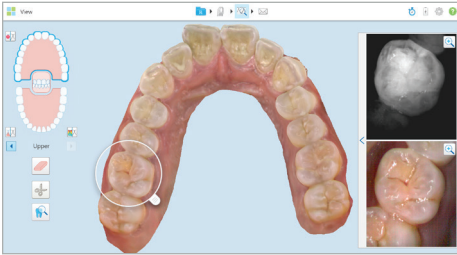
Begin Restorative Treatment
Restore with ZimVie Ti-Base or CAD/CAM abutment

 **ZimVie**

Expand restorative treatments with the iTero Element™ intraoral scanner digital workflow.

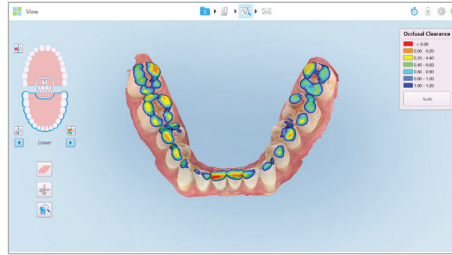
Oral health capabilities

Discover the benefits of cutting-edge, digital scanning performance that delivers enhanced speed, visualization, and design to optimize your workflow and your practice.



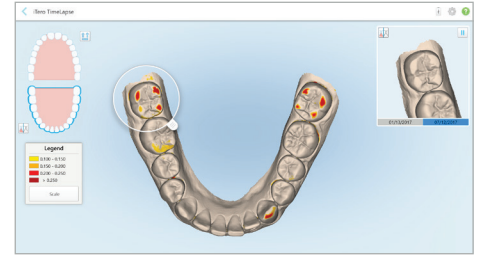
iTero™ NIRI Technology

Unique all-in-one scan captures both NIRI (Near Infra-Red Imaging) and 3D color images to aid in detecting and monitoring interproximal caries.



Occlusogram

Highlight contact relationship between arches with clear, color-coded images.



iTero™ TimeLapse Technology

Show patients' changes in tooth wear, tooth movement, and gingiva over time using engaging chairside visuals.

Unlock advanced Invisalign® workflow features with the iTero Element™ 5D imaging system with Plus package and laptop.*

- Streamline Invisalign® case submission with iTero Element™ 5D Auto-Upload
- Help drive Invisalign® case acceptance with realistic in-face visualization of your patient's potential future smile with Invisalign® Outcome Simulator Pro

* Available with the comprehensive package

Ordering Information

Description	Item No.
5D Imaging System with Plus Package and Laptop Foundation Restorative	216533207021
5D Imaging System with Plus Package and Laptop Foundation Restorative - 3 year	216533207021-3
5D Imaging System with Plus Package and Laptop Comprehensive	216533
5D Imaging System with Plus Package and Laptop Comprehensive - 3 year	216533-3

Contact your
ZimVie representative

For more information, visit ZimVie.com

ZimVie

4555 Riverside Drive
Palm Beach Gardens, FL 33410
Phone: +1-561-776-6700
Fax: +1-561-776-1272



1. The laptop is supported by Dell through the ProSupport Extended Warranty service provided by Dell. When troubleshooting, an iTero Support agent can connect practice directly with Dell to help facilitate support. 2. Align's Customer Support team will be the focal point of contact for all support issues, including hardware related to iTero and laptop support through Dell. 3. Following initial one or three-year service plan, additional charges will apply for remote support connection and repairs for customers not on a service plan. Additional charges may apply for software upgrades and cloud storage for customers not on a service plan.

Unless otherwise indicated, as referenced herein, all trademarks and intellectual property rights are the property of ZimVie Inc. or an affiliate; and all products are manufactured by one or more of the dental subsidiaries of ZimVie Inc. (Biomet 3i, LLC, Zimmer Dental, Inc., etc.) and marketed and distributed by ZimVie Dental and its authorized marketing partners. ZimVie is an authorized distributor of iTero Products which are manufactured by Align Technology, Inc. For additional product information, please refer to the individual product labeling or instructions for use. Product clearance and availability may be limited to certain countries/regions. This material is intended for clinicians only and does not comprise medical advice or recommendations. Distribution to any other recipient is prohibited. This material may not be copied or reprinted without the express written consent of ZimVie. ZV1789_US/CAN REV A 11/23. ©2023 ZimVie, Inc. All rights reserved.

