



Porcine Anorganic Bone Mineral



RegenerOss[®] Resorbable Xenograft

Carbonate Apatite Bone Graft Substitute¹

RegenerOss Resorbable Xenograft is a porcine-derived carbonate apatite intended for bone repair and regeneration for oral surgical procedures.

Ideal Porous Osteoconductive Scaffold

The osteoconductive surface and porous structure of RegenerOss Resorbable Xenograft allow for new bone formation, both around and within the particle.

Creating the Right Environment²

RegenerOss Resorbable Xenograft is highly porous which allows in-growth of blood vessels that provide adequate supply of nutrients, delivery of cells, and growth factors necessary for osseous tissue formation.

Easy to Use

Perforated cap is designed for easy hydration. Once fully hydrated, remove cap and deliver product to defect sites.



RegenerOss Resorbable Xenograft

Porcine Anorganic Bone Mineral

Bone Repair and Regeneration for Oral Surgical Procedures

- Provides an osteoconductive scaffold for bone regeneration due to its anorganic, porous structure
- Ideal option for alveolar ridge reconstruction, maxillary sinus floor elevation, filling of periodontal defects (including infrabony defects and defects after root resection, cystectomy, and filling of extraction sockets)

Natural Bone Carbonate Apatite Structure

- Carbonate apatite demonstrates better osteoconductive potential than hydroxyapatite^{3,4,5}
- Resorption and remodeling profiles are closer to normal human bone than those of synthetic bone graft substitutes⁴

The Right Environment for Bone Regeneration

- High porosity means that space is maintained for new bone deposition
- Surface roughness allows for cellular adhesion and bone in-growth⁶

Ordering Information:

Small Particles

Item Number	Description
ROXR05	RegenerOss Resorbable Xenograft, 250 -1000 µm, 0.5 cc
ROXR10	RegenerOss Resorbable Xenograft, 250 -1000 µm, 1.0 cc
ROXR20	RegenerOss Resorbable Xenograft, 250 -1000 µm, 2.0 cc
ROXR40	RegenerOss Resorbable Xenograft, 250 -1000 µm, 4.0 cc

Shelf-Life: Three (3) years

Large Particles

Item Number	Description
ROXRLG10	RegenerOss Resorbable Xenograft, 1000 -2000 µm, 1.0 cc
ROXRLG20	RegenerOss Resorbable Xenograft, 1000 -2000 µm, 2.0 cc

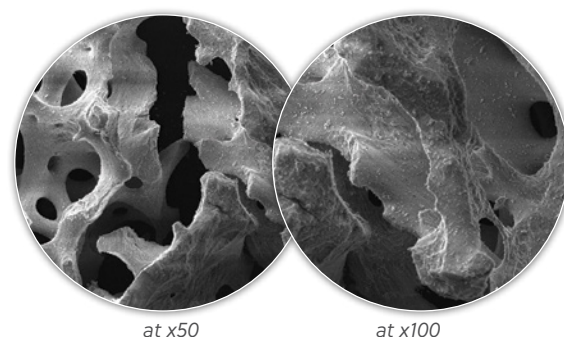
Shelf-Life: Three (3) years

Syringe Delivery - Small Particles

Item Number	Description
ROXRS025	RegenerOss Resorbable Xenograft, Syringe, 250-1000 µm, 0.25 cc
ROXRS05	RegenerOss Resorbable Xenograft, Syringe, 250-1000 µm, 0.5 cc

Shelf-Life: Two (2) years

SEM of RegenerOss Resorbable Xenograft



References

1. Data on file with Regenity.
2. Klenke FM1, Liu Y, Yuan H, Hunziker EB, Siebenrock KA, Hofstetter W.2009. Impact of pore size on the vascularization and osseointegration of ceramic bone substitutes in vivo. J Biomed Mater Res A85(3):777-86.
3. Spense G., Patel N., Brooks R., Rushton N. 2009. Carbonate Substituted Hydroxyapatite: Resorption by Osteoclasts Modifies the Osteoblastic Response. Journal of Biomedical Materials Research Part A.
4. Ellies LG, Carter JM, Natiella JR, Featherstone JDB, Nelson DGA. 1988. Quantitative Analysis of Early In Vivo Tissue Response to Synthetic Apatite Implants. J Biomed Mater Res 22:137-148.
5. Landi E., Celotti G., Logroscino G., Tampieri A. 2003. Carbonated Hydroxyapatite as Bone Substitute. Journal of the European Ceramic Society 23: 2931-2937.
6. Deligianni DD, Katsala ND, Koutsoukos PG, Missirlis YF, Effect of Surface Roughness of Hydroxyapatite on Human Bone Marrow Cell Adhesion, Proliferation, Differentiation and Detachment Strength Elsevier Biomaterials 22 (2001) 87-96.

For more information, visit ZimVie.com

ZimVie
4555 Riverside Drive
Palm Beach Gardens, FL 33410
1-800-342-5454
Phone: +1-561-776-6700
Fax: +1-561-776-1272

 **ZimVie**
Restoring Daily Life.®

Unless otherwise indicated, as referenced herein, all trademarks and intellectual property rights are the property of ZimVie Inc. or an affiliate; and all products are manufactured by one or more of the dental subsidiaries of ZimVie Inc. (Biomet 3i, LLC, Zimmer Dental, Inc., etc.) and marketed and distributed by ZimVie Dental (formerly Zimmer Biomet Dental) and its authorized marketing partners. For additional product information, please refer to the individual product labeling or instructions for use. Product clearance and availability may be limited to certain countries/regions. This material is intended for clinicians only and does not comprise medical advice or recommendations. Distribution to any other recipient is prohibited. This material may not be copied or reprinted without the express written consent of ZimVie. ZV1464 REV B 04/24 ©2024 ZimVie Inc. All rights reserved.

