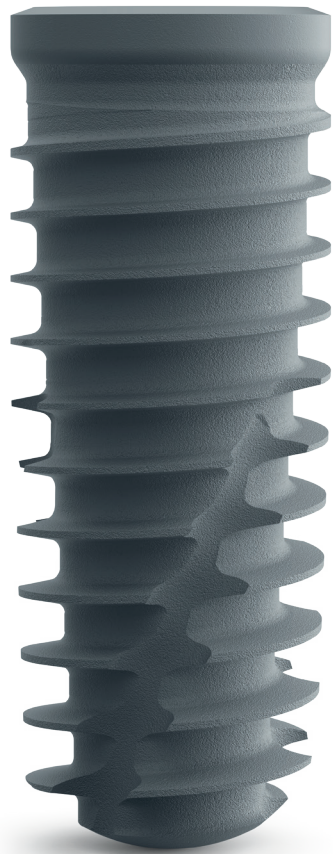




Deliver an immediate
smile like a PRO



T3[®] PRO

Tapered Implant

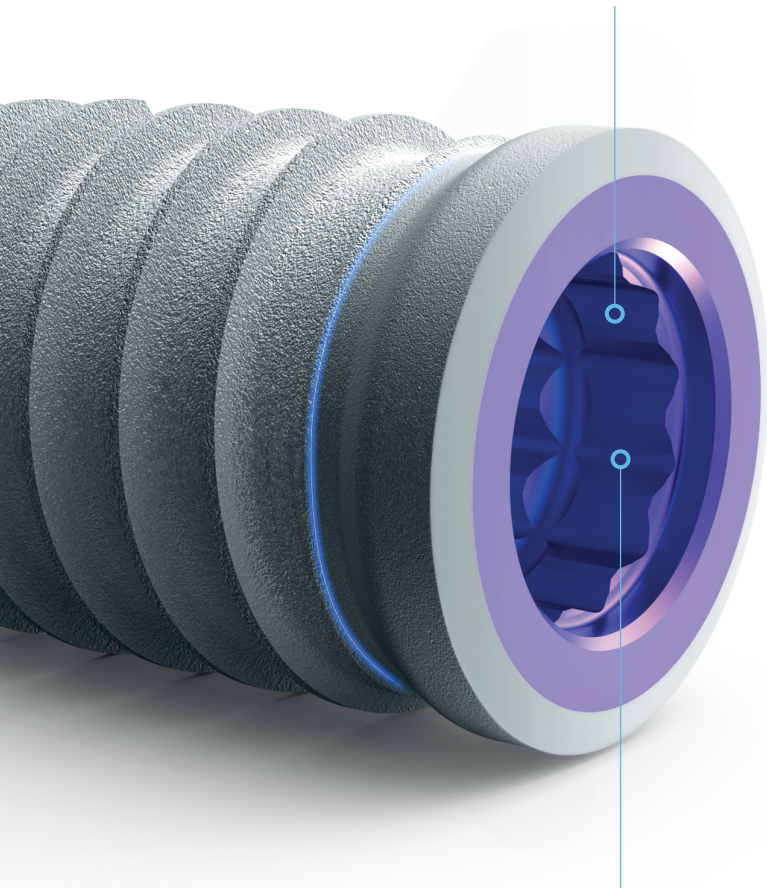




T3 PRO

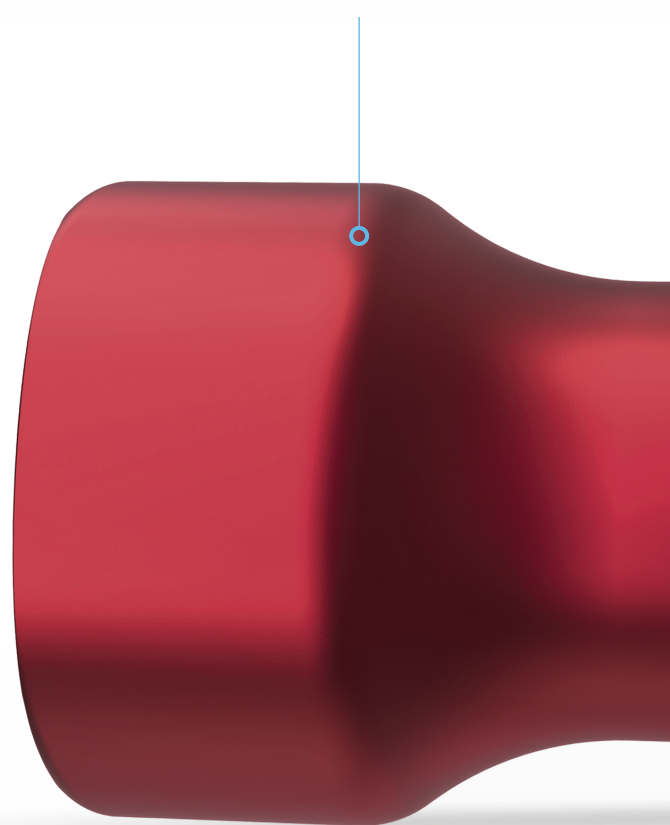
Engineered for Immediacy and Apical Stability

Certain® connection compatible with **SureSeal™** technology: Minimizes micromotion and microleakage.⁵



Certain® connection: Compatible with existing Certain tapered drilling protocols and restorative components.

Compatible with **Encode® Emergence Healing Abutment** which provides hard and soft tissue maintenance.^{6,7}

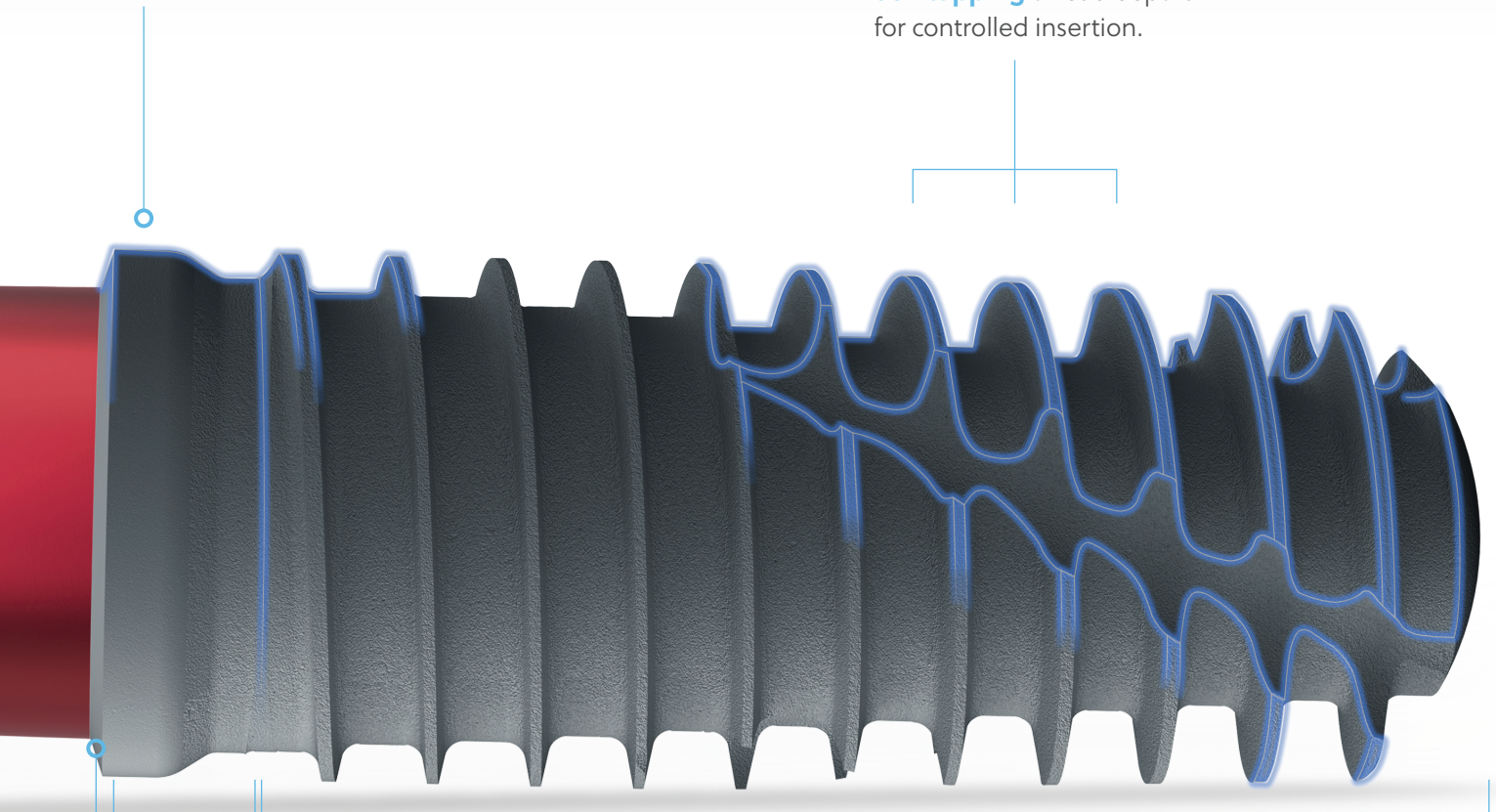


Platform Switch: A proven strategy to maintain bone level.⁴



Collar designed for **placement depth adjustment.**

Self tapping thread depths for controlled insertion.



Collar region with **minimally rough proprietary Osseotite® surface** with no higher risk of peri-implantitis than machined titanium while supporting healthy bone level maintenance.^{1,2}

Threaded region with **coarse-micron surface features** shown to provide long-term support to mature bone matrix.³

Hybrid Surface

To experience a new generation of PRO visit, ZimVie.com/T3Pro

1. Davies JE. Understanding peri-implant endosseous healing. J Dent Educ. 2003 Aug;67(8):932-49. PMID: 12959168.
2. Zetterqvist L, Feldman S, Rotter B, Vincenzi G, Wennström JL, Chierico A, Stach RM, Kenealy JN. A prospective, multicenter, randomized-controlled 5-year study of hybrid and fully etched implants for the incidence of peri-implantitis. J Periodontol. 2010 Apr;81(4):493-501. doi: 10.1902/jop.2009.090492. PMID: 20367092.
3. Davies JE, Mendes VC, Ko JC, Ajami E. Topographic scale-range synergy at the functional bone/implant interface. Biomaterials. 2014 Jan;35(1):25-35. doi: 10.1016/j.biomaterials.2013.09.072. Epub 2013 Oct 4. PMID: 24099707.
4. Boitel N, Andreoni C, Grunder U, Naef R, Meyenberg K. A three year prospective, multicenter, randomized-controlled study evaluating platform-switching for the preservation of peri-implant bone levels. Poster Presentation P83: Academy of Osseointegration, 26th Annual Meeting: 2011 March 3-5; Washington DC.
5. Al-Jadaa A, Attin T, Peltomäki T, Schmidlin PR. Comparison of three in vitro implant leakage testing methods. Clin Oral Implants Res. 2015 Apr;26(4):e1-e7. doi: 10.1111/clr.12314. Epub 2013 Dec 16. PMID: 24330007. Note: The study design was conceived and executed independently; however, the presenter's PhD fellowship is supported – in part - by Biomet 3i.
6. Canullo L, Bignozzi I, Cocchetto R, Cristalli MP, Iannello G. Immediate positioning of a definitive abutment versus repeated abutment replacements in post-extractive implants: 3-year follow-up of a randomised multicentre clinical trial. Eur J Oral Implantol. 2010 Winter;3(4):285-96.
7. Rodríguez X, Vela X, Méndez V, Segalà M, Calvo-Guirado JL, Tarnow DP. The effect of abutment dis/reconnections on peri-implant bone resorption: a radiologic study of platform-switched and non-platform-switched implants placed in animals. Clin Oral Implants Res. 2013 Mar;24(3):305-11. doi: 10.1111/j.1600-0501.2011.02317.x. Epub 2011 Oct 3.



Global Headquarters
4555 Riverside Drive
Palm Beach Gardens, FL 33410
Tel: +1-561-776-6700
Fax: +1-561-776-1272

Unless otherwise indicated, as referenced herein, all trademarks and intellectual property rights are the property of ZimVie Inc. or an affiliate; and all products are manufactured by one or more of the dental subsidiaries of ZimVie Inc. (Biomet 3i, LLC, Zimmer Dental, Inc., etc.) and marketed and distributed by ZimVie Dental and its authorized marketing partners. For additional product information, please refer to the individual product labeling or instructions for use. Product clearance and availability may be limited to certain countries/regions. This material is intended for clinicians only and does not comprise medical advice or recommendations. Distribution to any other recipient is prohibited. This material may not be copied or reprinted without the express written consent of ZimVie. ZV0066 REV A 05/22 ©2022 ZimVie. All rights reserved.

